



Henri Toulouse-Lautrec

1864-1901

**FRENCH PAINTER of
ADVERTISING POSTERS**

ART HERITAGE PROGRAM

Mesa County Valley School District 51

Grand Junction, CO

crbrady ©2008



Henri Toulouse-Lautrec

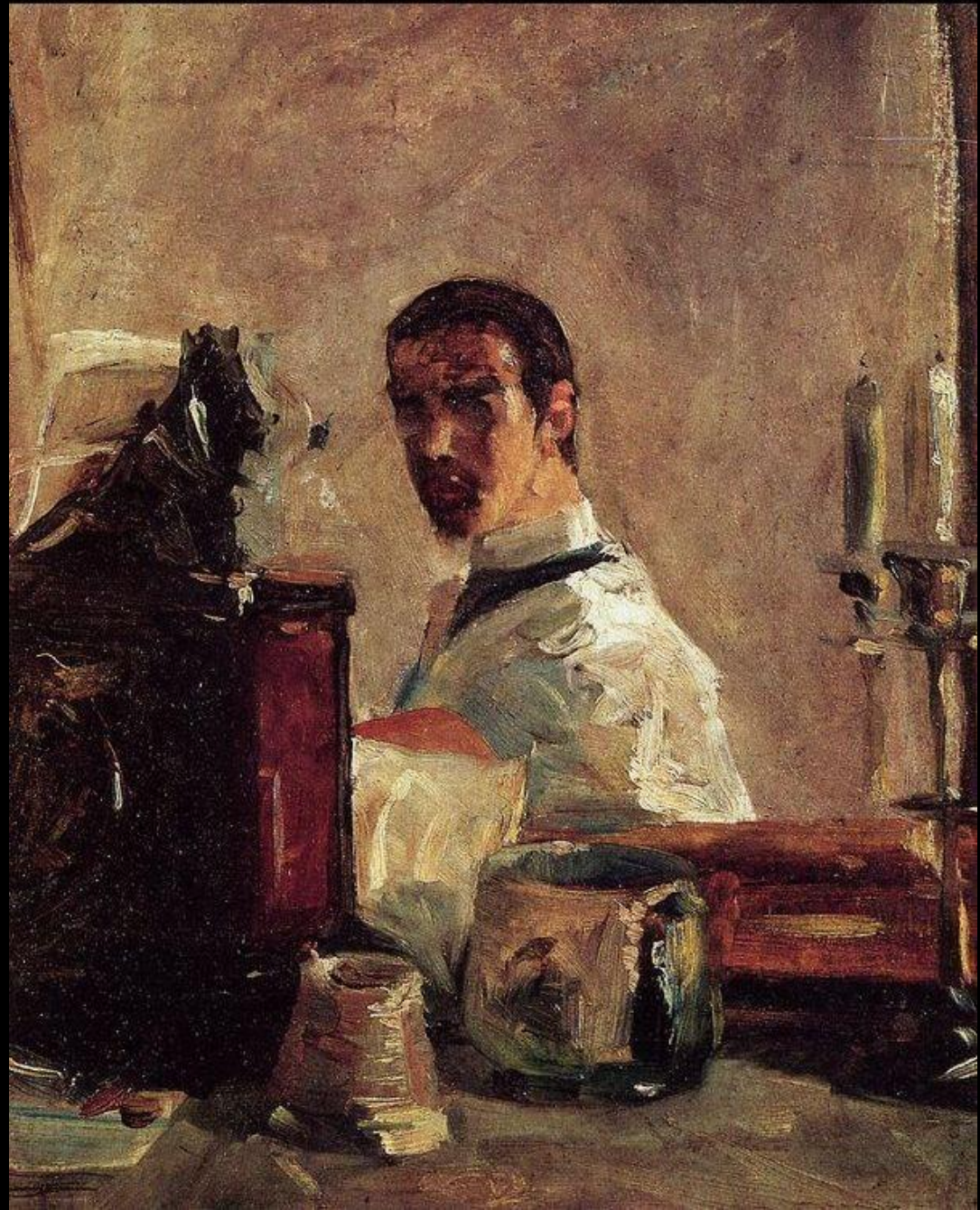


Copyright 12/2009. Property of the Mesa County Valley School District 51, Grand Junction, CO. This article was created for educational purposes only. No part may be copied in part or in whole without permission. Certain materials are included under the fair use exemption of the U.S. Copyright Law and have been prepared according to the multimedia fair use guidelines and are restricted from further use. The information contained within this artist unit is a compilation of information gleaned from several sources, some unknown. If credit has not been properly given, please contact our office so this can be corrected.



Learning Targets for Toulouse-Lautrec unit:

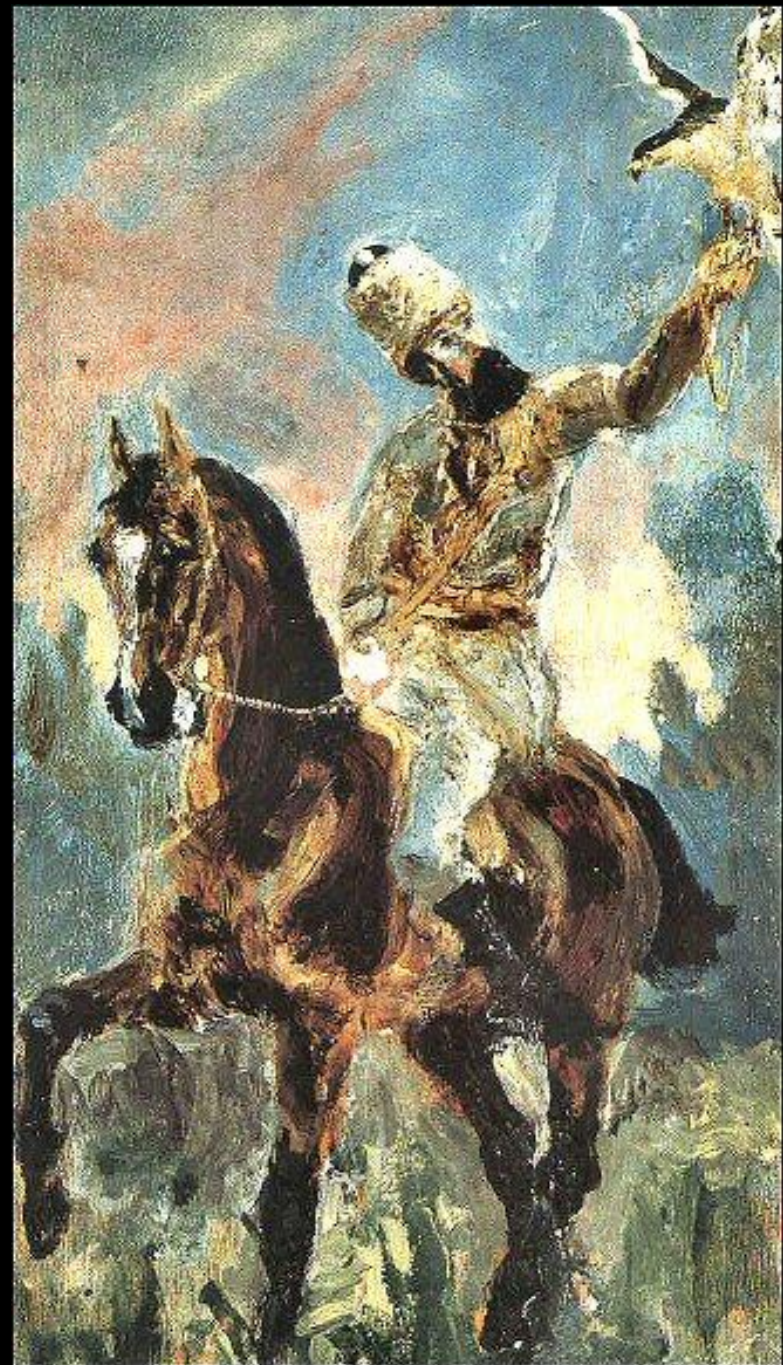
- Students will recognize and describe examples of advertising in the world around them *(e.g., Taco Bell, Pepsi, Mattel, Marvel Comics, etc.)*
- Students will demonstrate their understanding of Toulouse-Lautrec's art by using images and words to illustrate an event poster *(e.g., a poster about spay/neutering pets, Spring Art Week at the Art Center, etc.)*



1. Self-Portrait in a Mirror: 1880, oil on cardboard: 16" x 13"

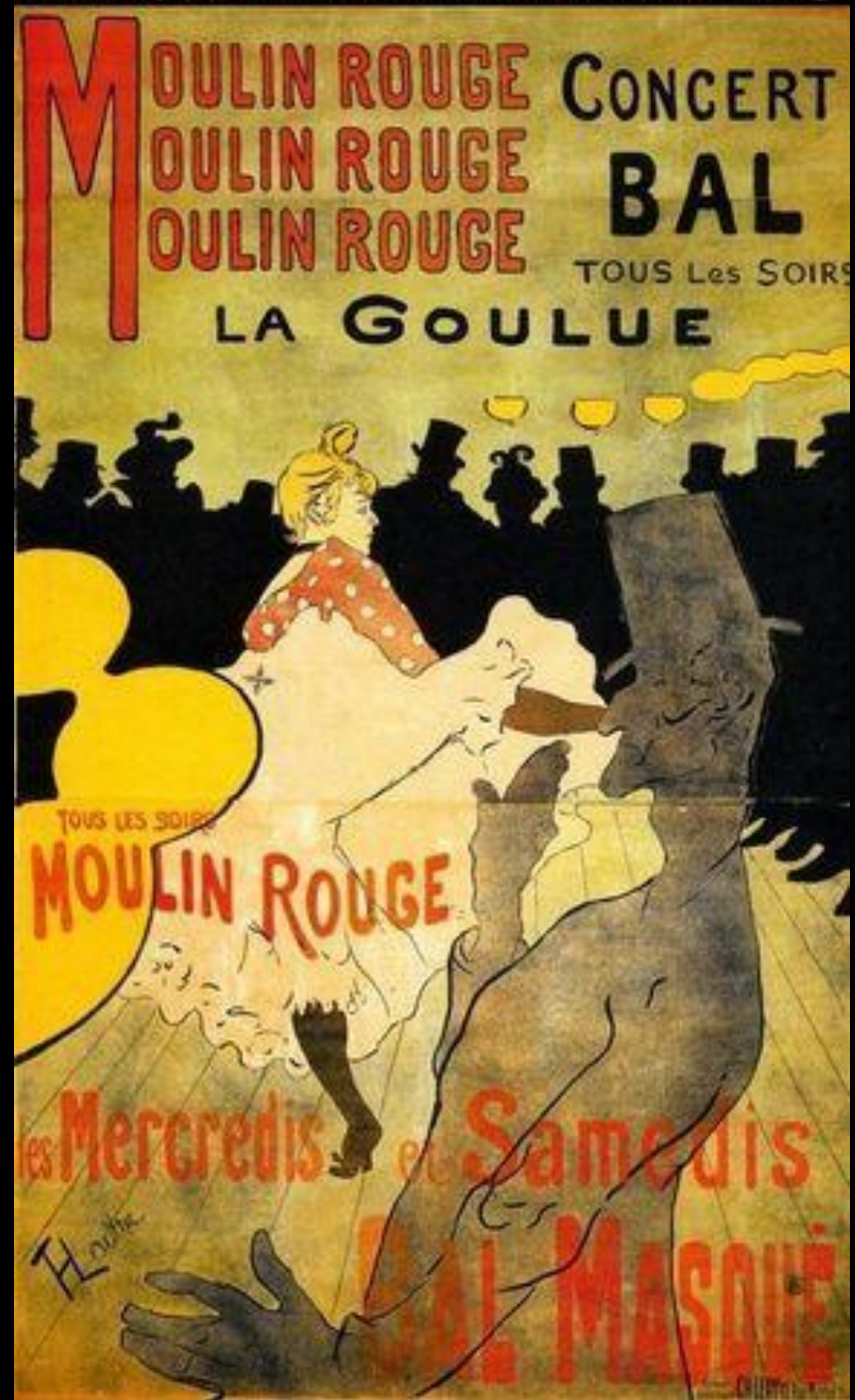


2. Portrait of Mother-Countess Adele de Toulouse-Lautrec at Breakfast: 1883: 37" x 32"



3. Portrait of Count Alphonse de Toulouse Lautrec: 1883: 37" x 37"

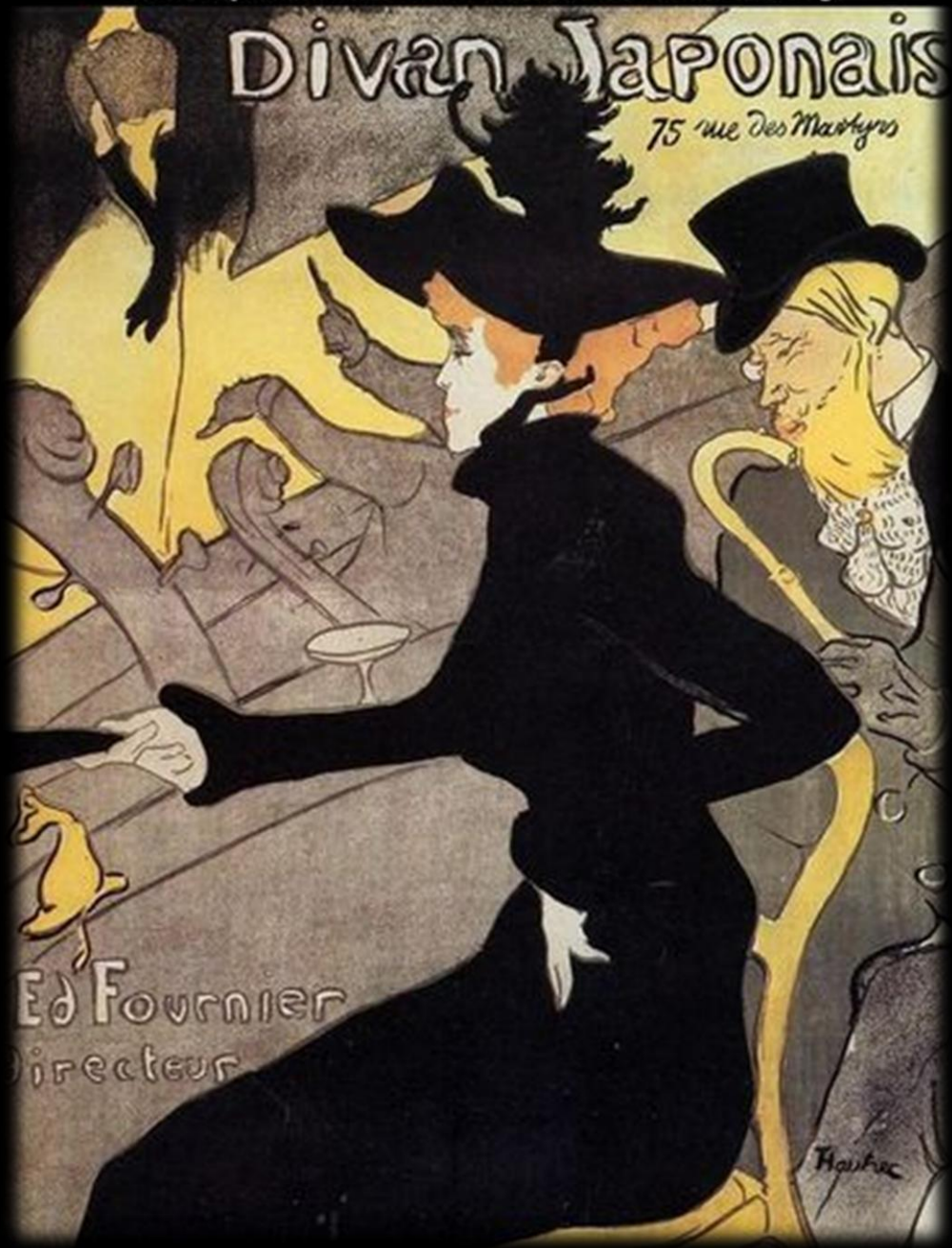
Can you find where Toulouse-Lautrec's signed his art?



4. *Moulin Rouge - La Goulue* 1891; Lithograph in four colors. 75 x 46 inches. Printed across three sheets of paper.



5. *Ambassadeurs: Aristide Bruant dans son cabaret* 1892; Lithograph in five colors. 54 x 37 ½ inches. Printed across two sheets of paper.



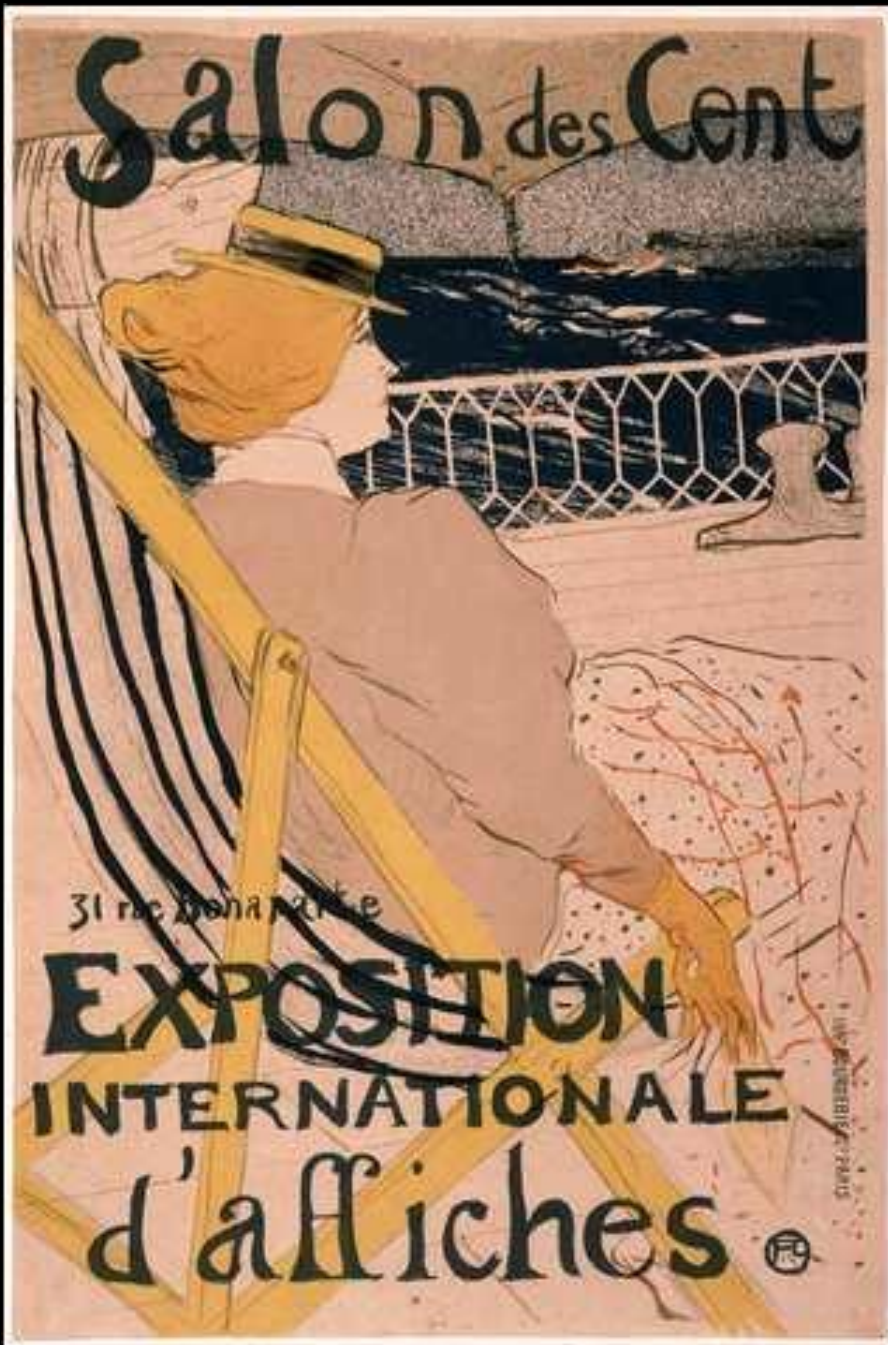
6. Divan Japonais: 1892, lithograph, 31" x 23 1/2"



7. *Jane Avril* , 1893; Lithograph in five colors. 50 1/2 x 37 inches. Text by the artist.



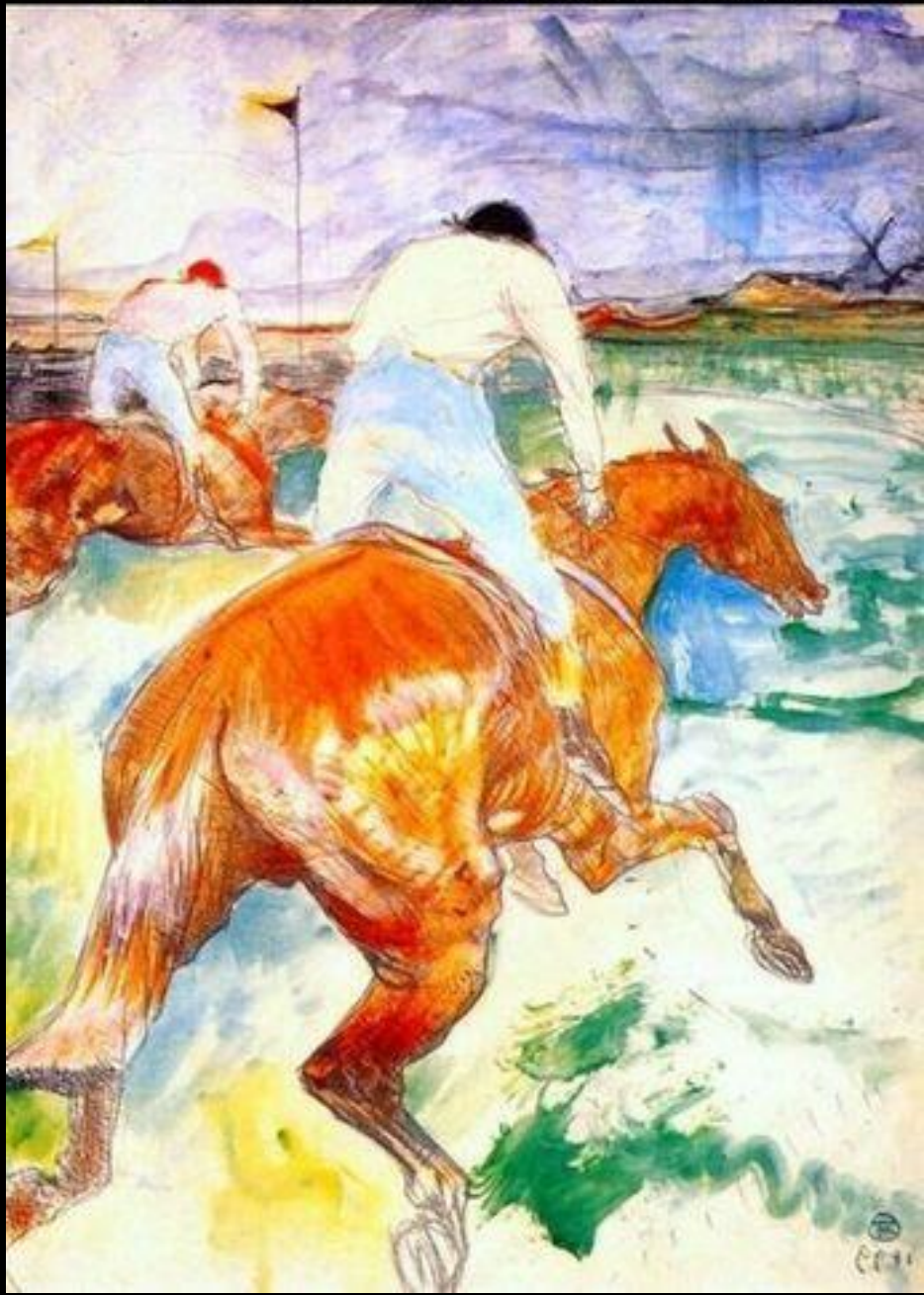
8. *La Troupe de Mlle Églantine*. 1896; Lithograph in three colors. 24 1/4 x 31 1/2 inches. Text by another hand.



9. *La Passagère du 54 - Promenade en yacht*
1896; Lithograph in seven colors.
23 15/16 x 15 3/4 inches.
Third state. Text by the artist.



10. **La Chaîne Simpson** . 1896; Lithograph in three colors. 33 7/8 x 47 inches.
Artist's monogram lower right. Text by another hand.



11. Jockey: 1899, lithograph: 20" x 14"

ART SPOOFS

