

Alexander Calder

ART HERITAGE PROGRAM

Mesa County Valley School District 51

Grand Junction, CO

crbrady ©2008



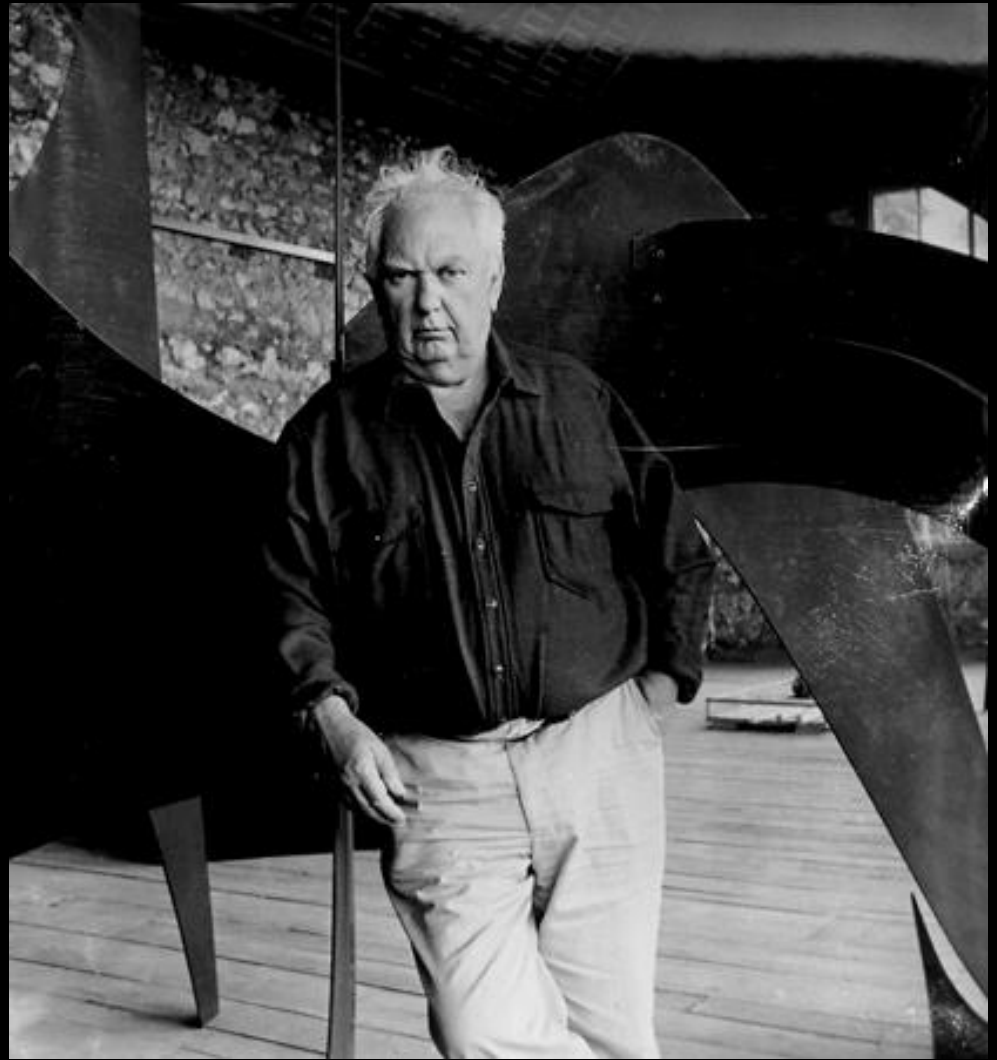
Copyright 03/2008. Property of the Mesa County Valley School District 51, Grand Junction, CO. This article was created for the express use of the Art Heritage Program for educational purposes only. No part may be copied in part or in whole without permission.

Certain materials are included under the fair use exemption of the U.S. Copyright Law and have been prepared according to the multimedia fair use guidelines and are restricted from further use.

The information contained within this artist unit is a compilation of information gleaned from several sources, some unknown. If credit has not been properly given, please contact our office so this can be corrected.

Alexander "Sandy" Calder was born into a family of well-known artists who encouraged him to create from a very young age. As a boy, he had his own workshop where he made toys for himself and his sister.

He received a degree in mechanical engineering in 1919 but soon after decided to pursue a career as an artist. Calder attended classes at the Art Students League in New York from 1923 to 1925, supporting himself by working as an illustrator.

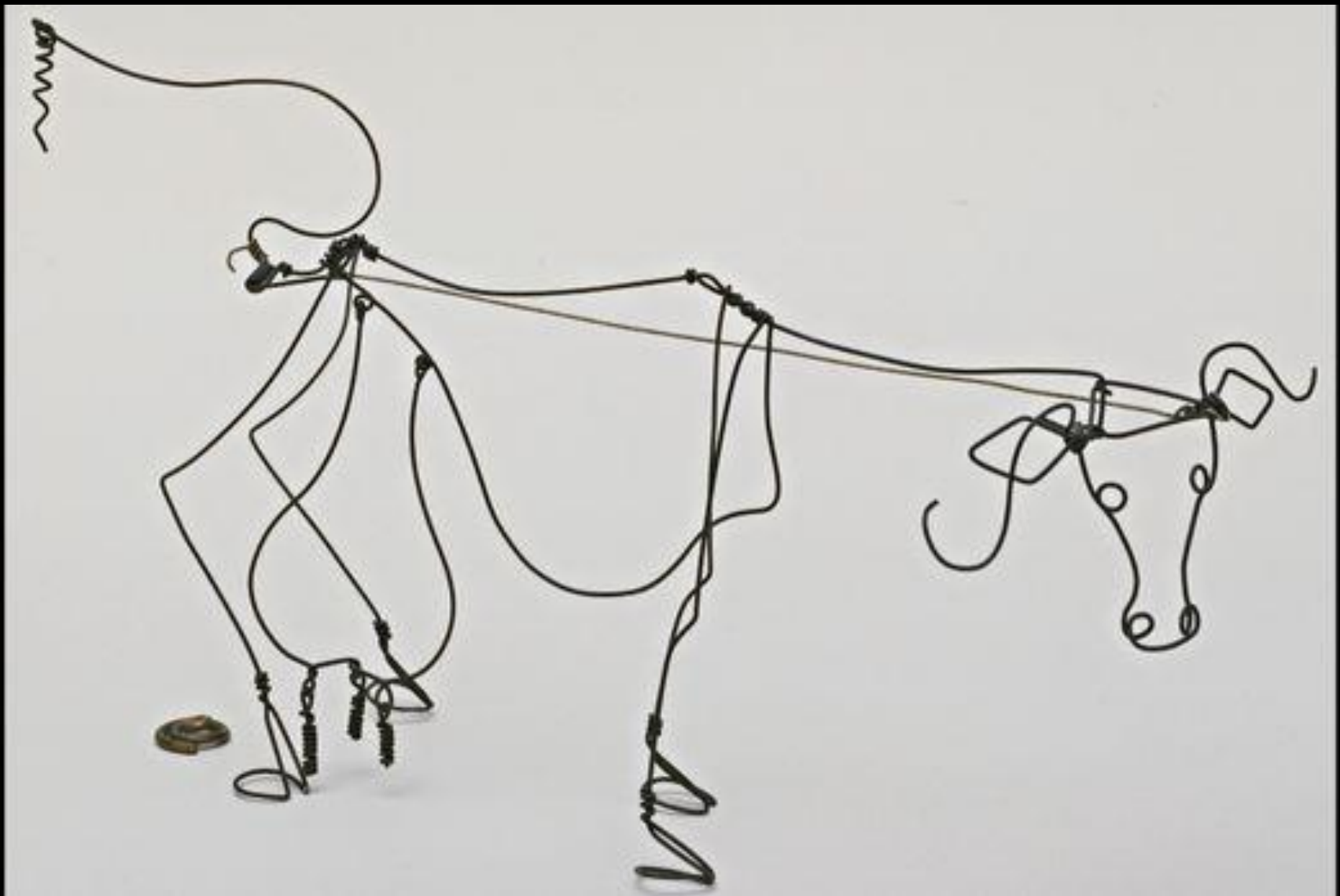




2. The Flying Trapeze
1925
oil on canvas
36 x 42 in.
Calder Foundation



3. Kangaroo Pull Toy, 1927, private collection, 23" long



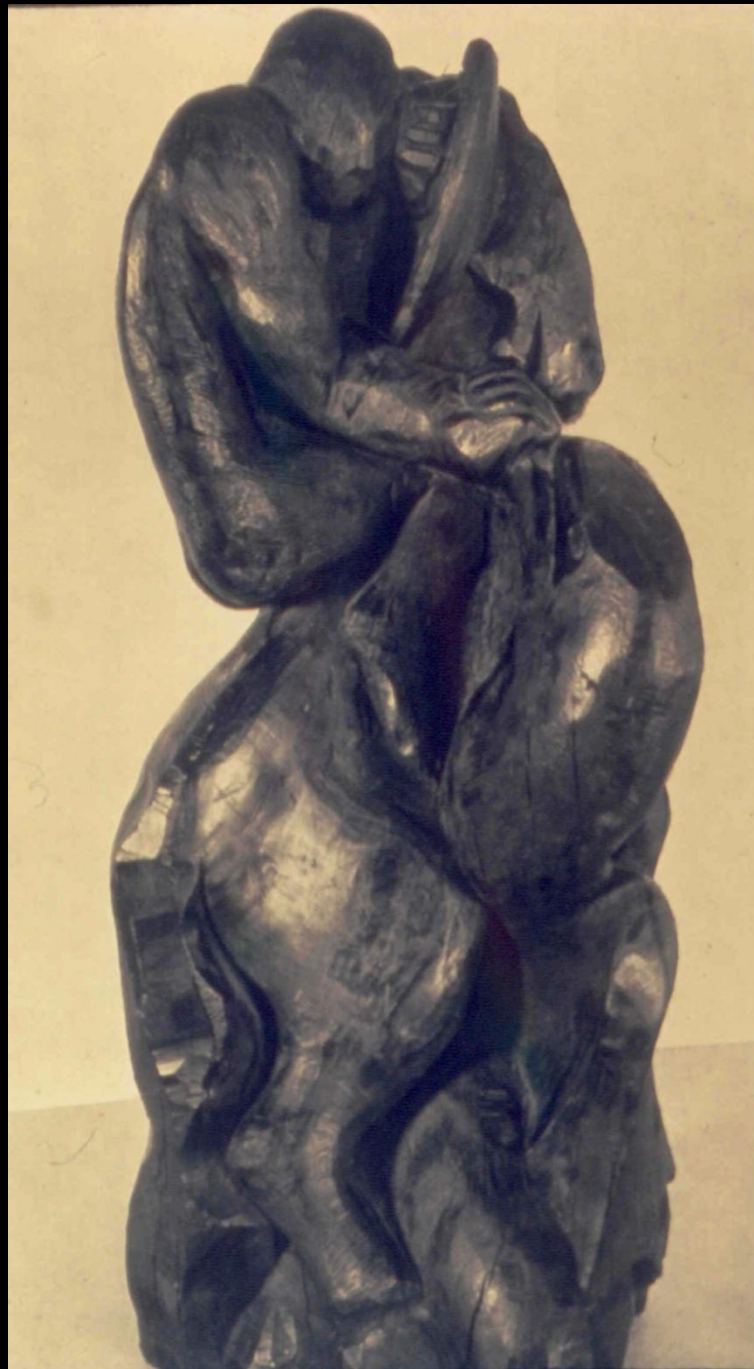
4. Cow. 1929. Steel wire, 6 1/2 x 16 x 4 1/4"
Gift of Edward M. M. Warburg.

<http://www.moma.org/collection>

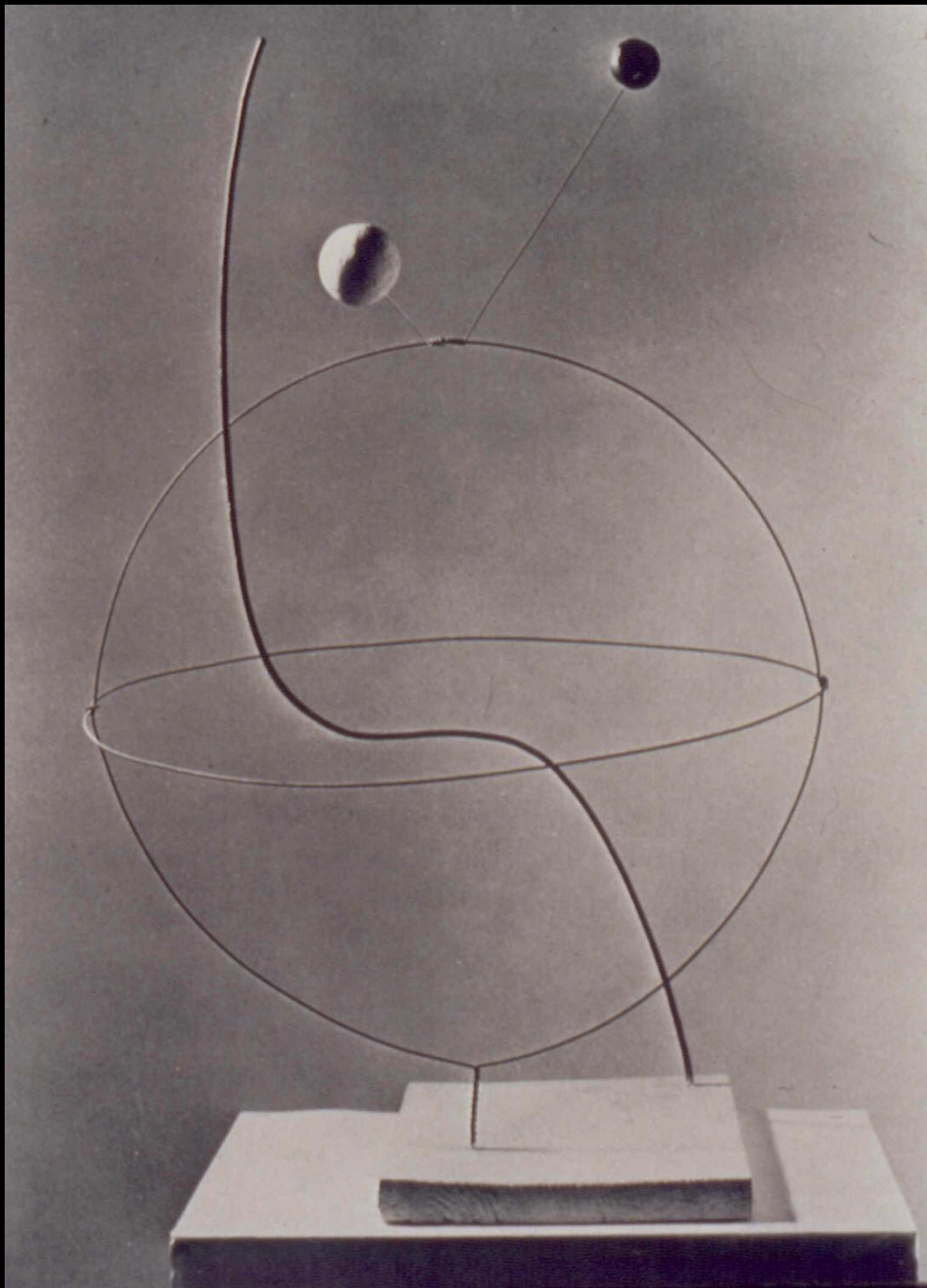
Watch a 9 minute video of Calder's Circus on You Tube:

<http://www.youtube.com/watch?v=1CZcn7f-W2w&feature=related>





5. ST. GEORGE AND THE DRAGON



5. *Croisiere (Cruise) / Little Universe / Universe*, 1931
Wire, wood and paint
37" x 23" x 23" (private collection)



7. LOBSTER TRAP AND FISH: Steel wire and aluminum: 8'6" X 9'6" -typical Calder colors



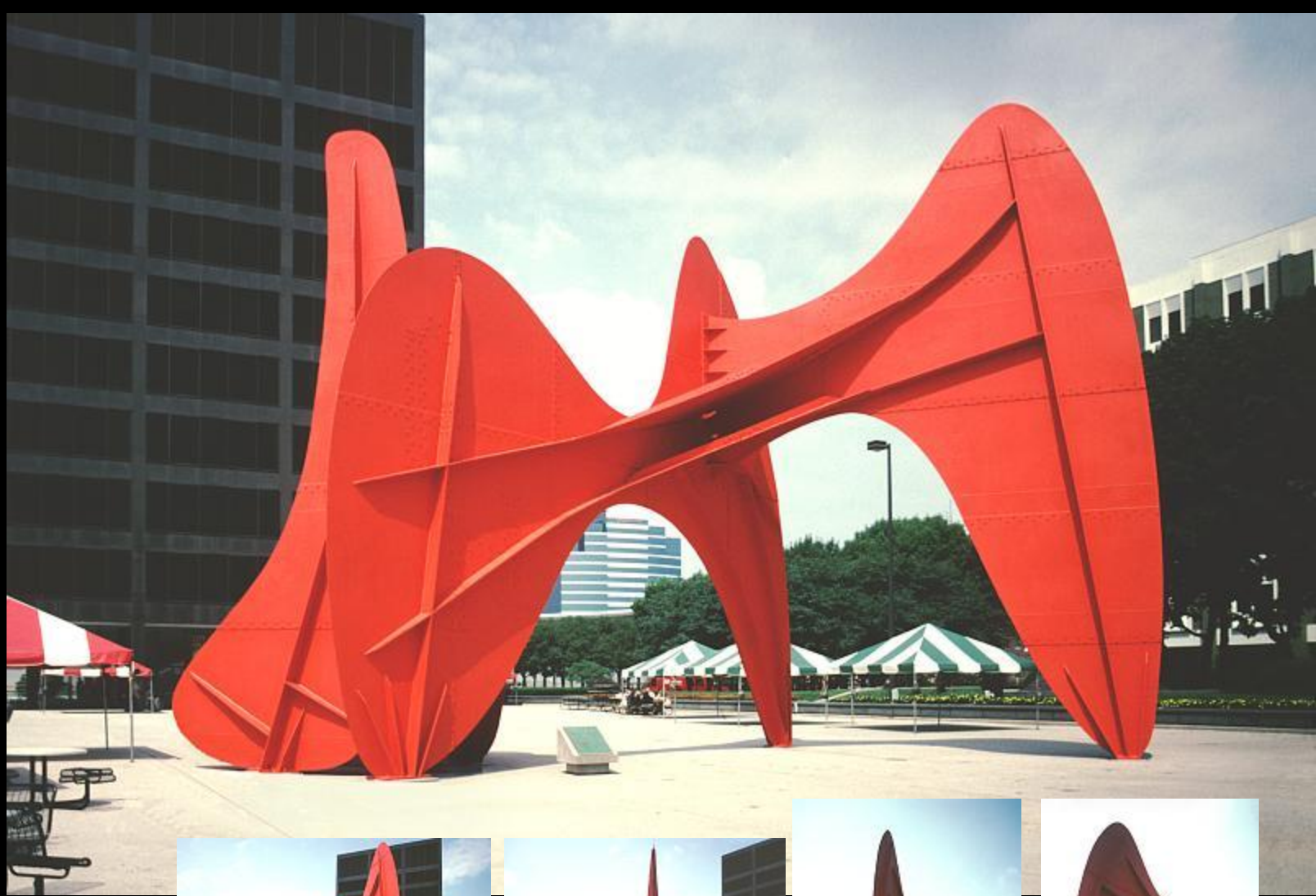
8. LOLLIPOPS: Metal Stabile: 1964:



9. HUMTULIPS:



10. *Black Widow*. Waterbury, Connecticut, 1959. Painted sheet steel, 7' 8" x 14' 3" x 7' 5"
(233.3 x 434.1 x 226.2 cm). Mrs. Simon Guggenheim Fund. (from MOMA collection)



11. LA VILLE VITESSE: Stable in Calder red: Grand Rapids Michigan: 1969.



12. FOUR ELEMENTS: Standing mobile with sheet metal and motor: 30' high" located in Stockholm, Sweden.



13. UNTITLED MOBILE: Aluminum: 1973-77. 76 feet, National Gallery of Art.

Calder created many types of art:

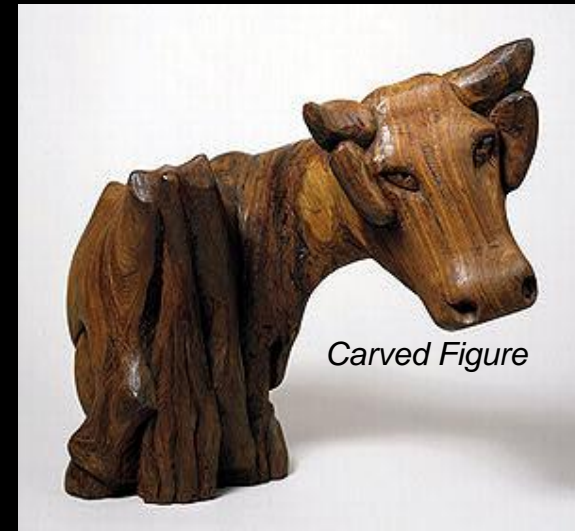


Calder with mini-mobile in Saché, France, 1965



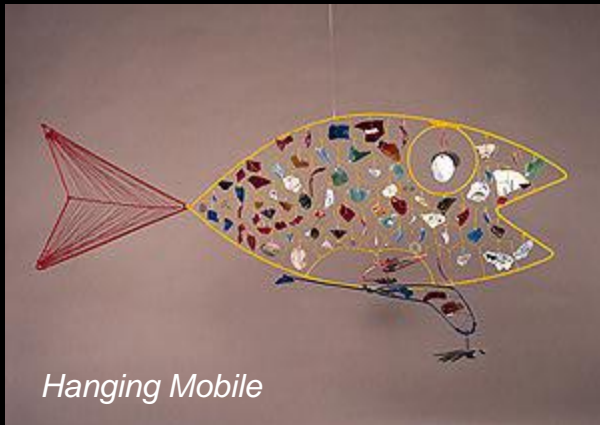
Bronze

Vache (Cow), 1930, 5 3/4 x 8 x 3 3/8"



Carved Figure

Cow, 1928; Wood (Brazilian rosewood); 12 5/8" h.



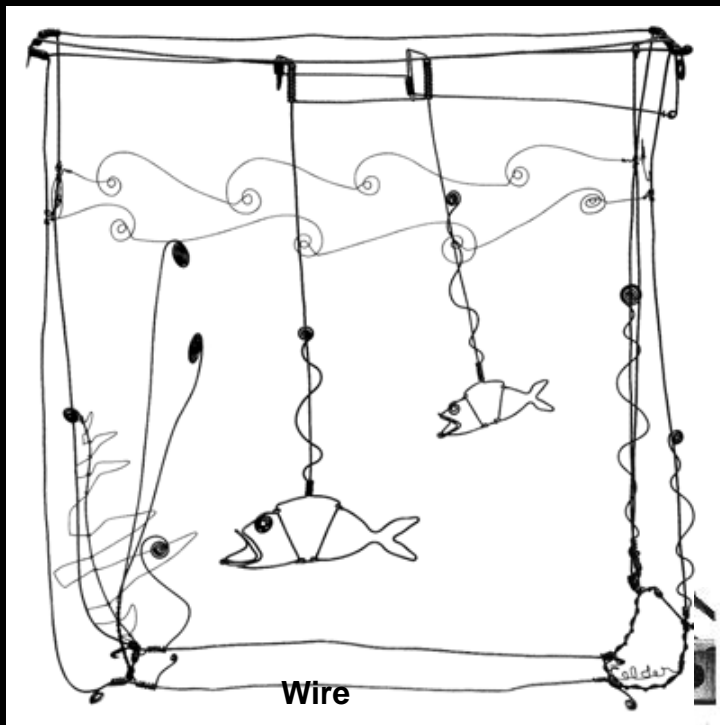
Hanging Mobile

Finny Fish, 1948
Painted steel rod and wire, glass fragments, sheet metal, brass, sardine can key. 21" x 61"



Jewelry

(Fish pin), 1940 c.
Silver and steel wire
3 3/8" x 5 3/8"



Alexander Calder, *Goldfish Bowl*, 1929, wire, private collection.



Standing Mobile



Mercury Fountain, 1937 Sheet metal, rod, wire, pitch, paint, and mercury with pumping mechanism and basin 102" h.

The Spider, 1940
Sheet metal, rods, and paint
95" x 99" x 73"



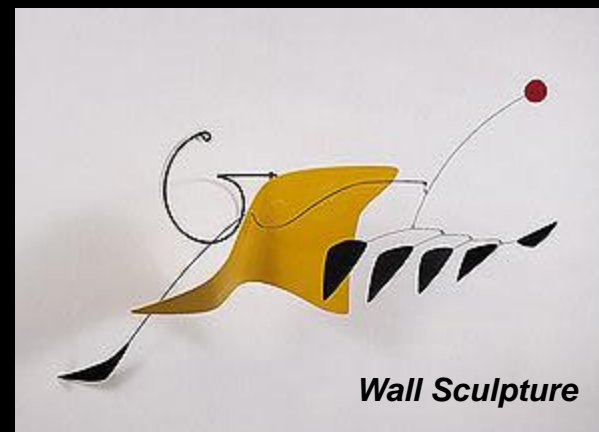
Oil Painting

Candy, 1925, Oil on canvas
36" x 30"



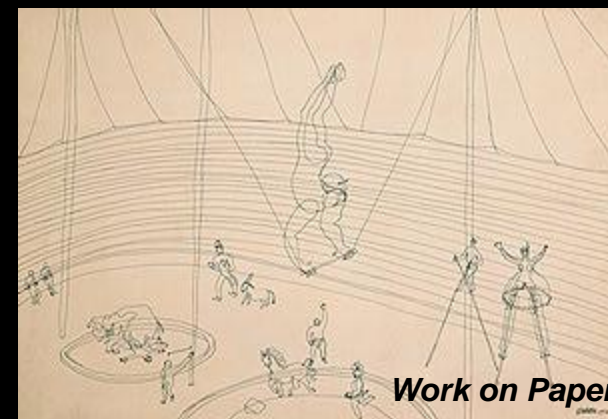
Stabile

Untitled, 1935 c.
Coco-bolo wood
38" x 9" x 2"



Wall Sculpture

Yellow Whale, 1958
Sheet metal, wire, and paint
26" x 45"



Work on Paper

The Circus, 1932
Ink on paper
20 1/4" x 29 1/4"



Bent Propeller (undated photo)

One of Calder's sculptures was destroyed in the attack on 9-11-01. About 50% of it was found. This photo is of the sculpture prior to 9-11-01.